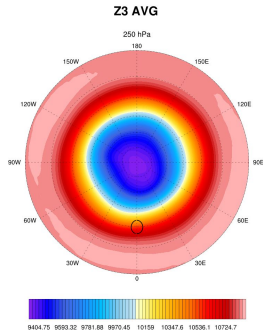


# Aqua/Drycore Simulations

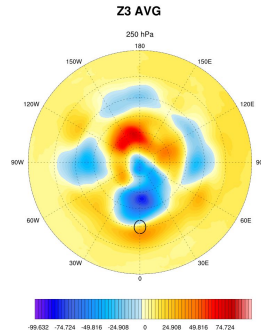
Brandon Benton

# Aqua: 10K Disk ( $r=10^\circ$ ) at $30^\circ$ N

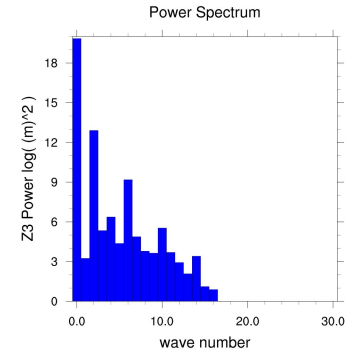
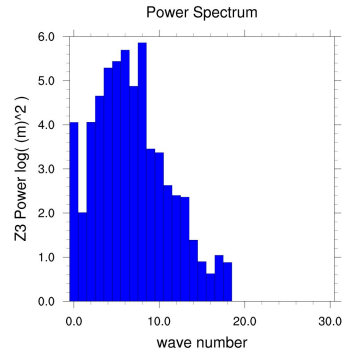
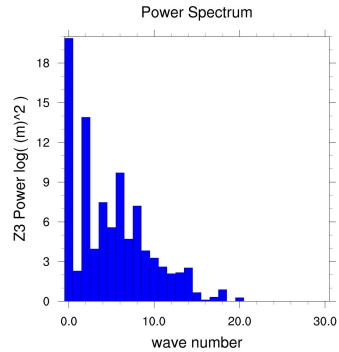
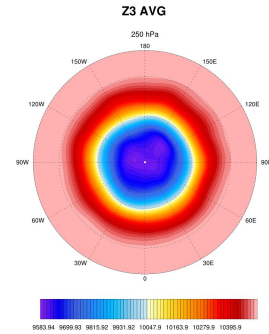
## With Anomaly



## Difference

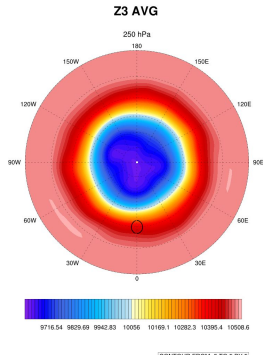


## Control

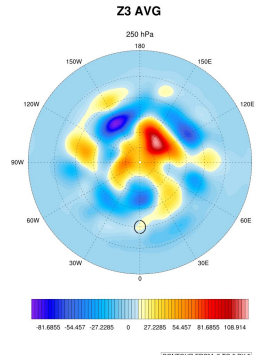


# Drycore: 10K Disk ( $r=10^\circ$ ) at $30^\circ$ N (surface anomaly)

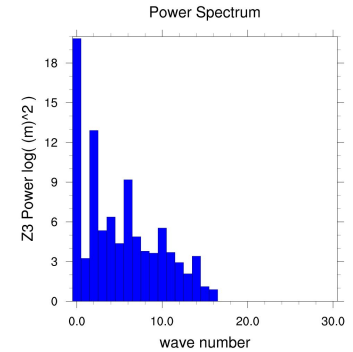
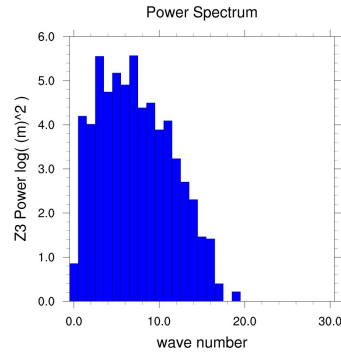
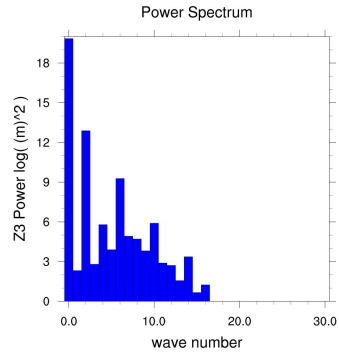
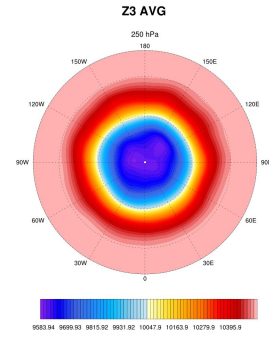
With Anomaly



Difference

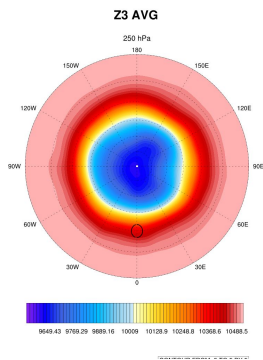


Control

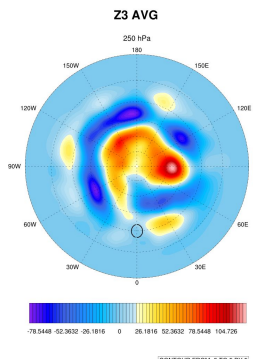


# Drycore: 10K Disk ( $r=10^\circ$ ) at $30^\circ$ N (with lapse rate)

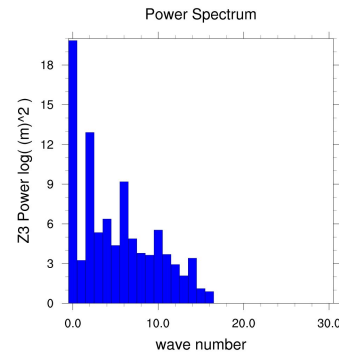
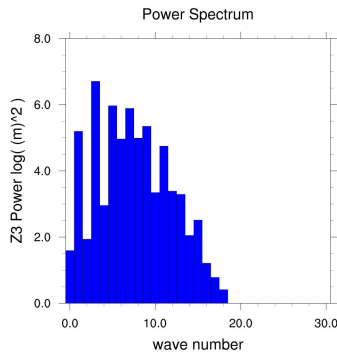
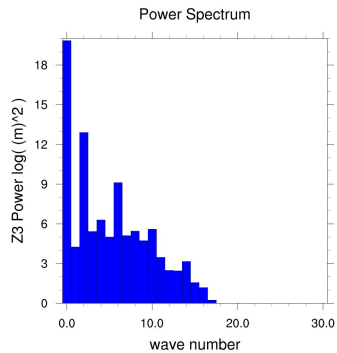
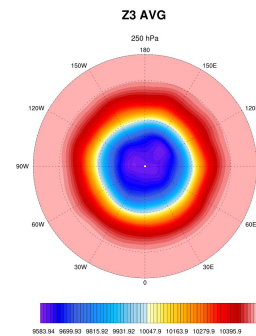
## With Anomaly



## Difference

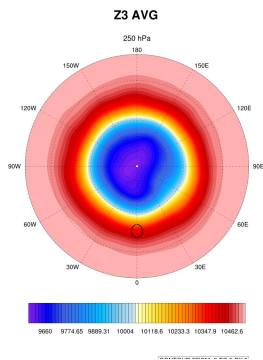


## Control

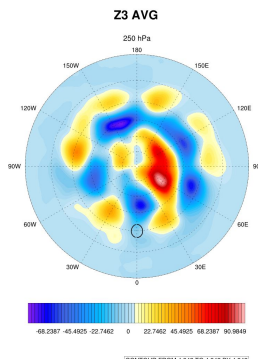


# Drycore: 10K Disk ( $r=10^\circ$ ) at $30^\circ$ N (constant with height)

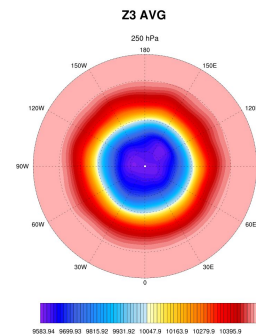
## With Anomaly



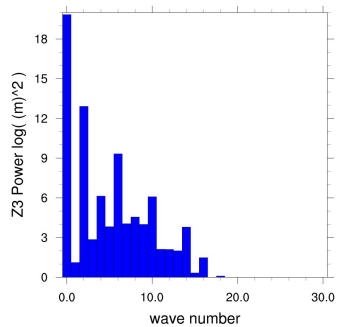
## Difference



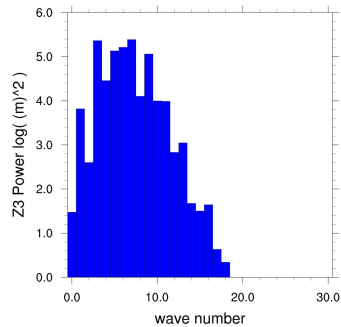
## Control



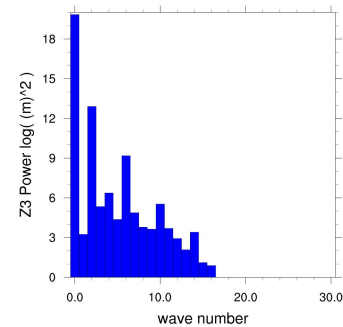
## Power Spectrum



## Power Spectrum

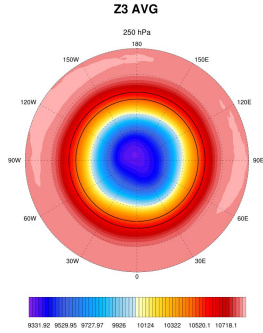


## Power Spectrum

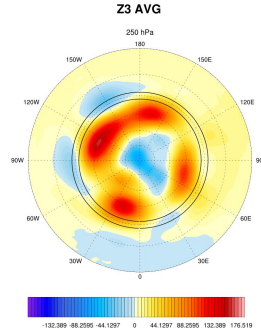


# Aqua: 5K Band ( $r=5^\circ$ ) at $30^\circ$ N

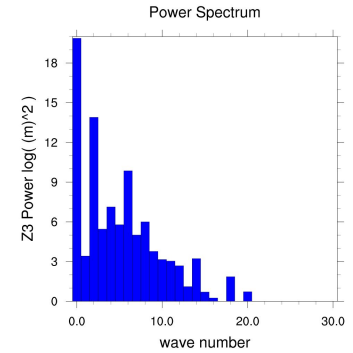
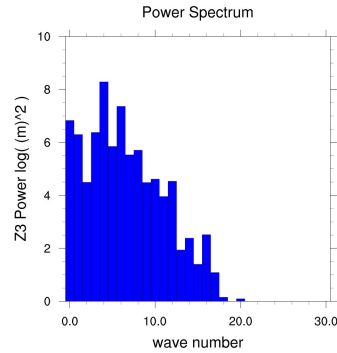
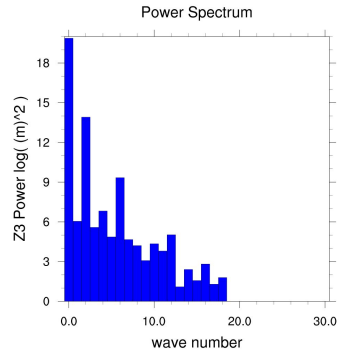
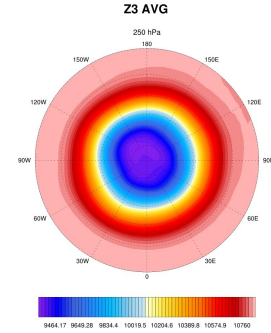
## With Anomaly



## Difference

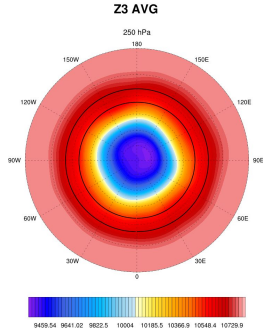


## Control

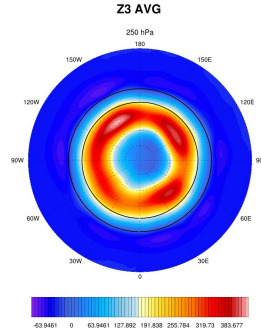


# Aqua: 10K Band ( $r=10^\circ$ ) at $30^\circ$ N

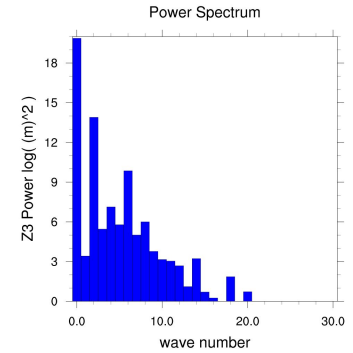
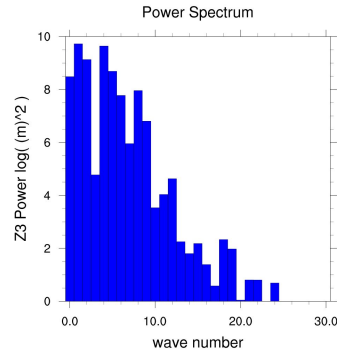
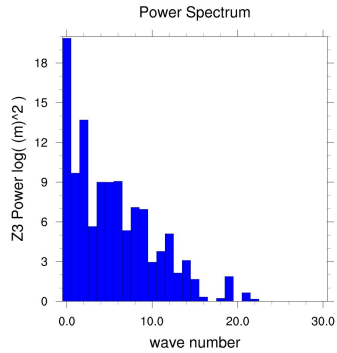
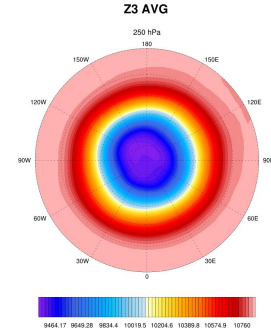
## With Anomaly



## Difference

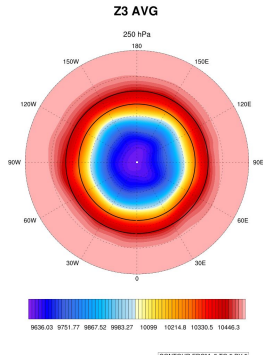


## Control

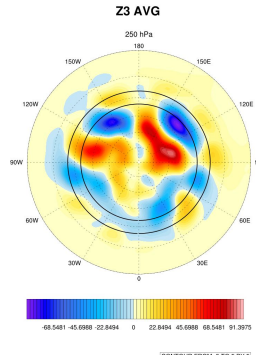


# Drycore: 10K Band ( $r=10^\circ$ ) at $30^\circ$ N (surface anomaly)

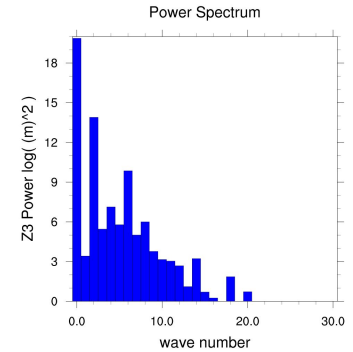
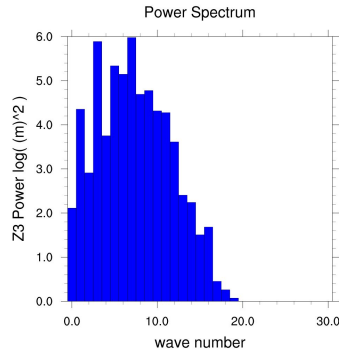
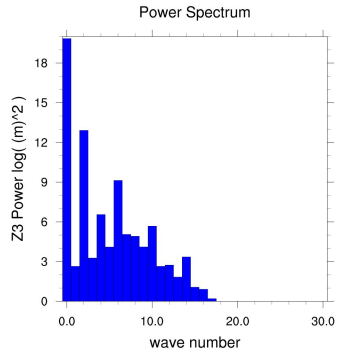
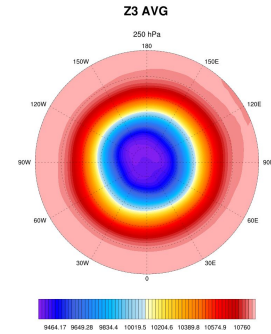
## With Anomaly



## Difference



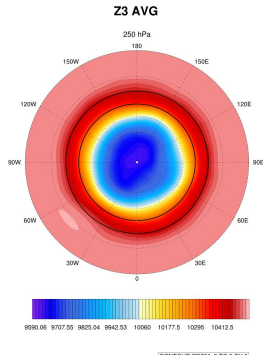
## Control



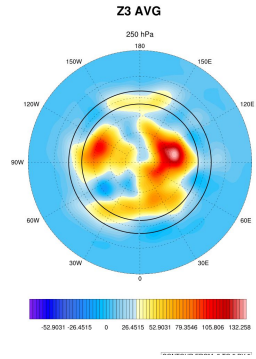


# Drycore: 10K Band ( $r=10^\circ$ ) at $30^\circ$ N (with lapse rate)

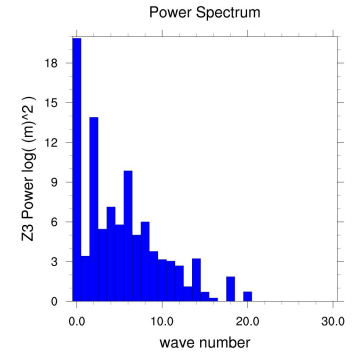
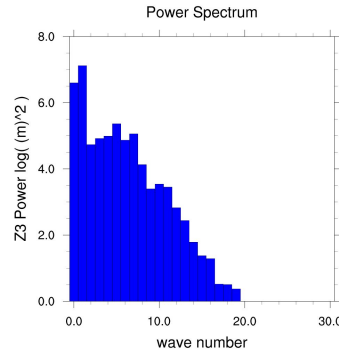
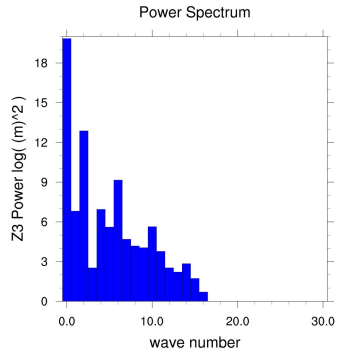
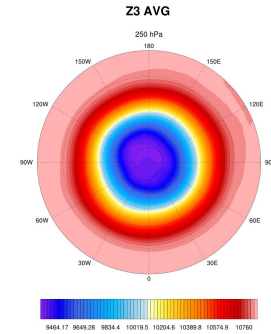
## With Anomaly



## Difference

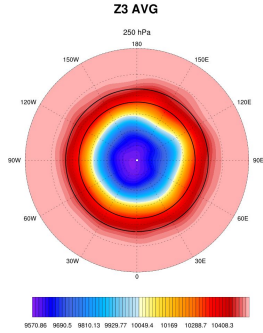


## Control

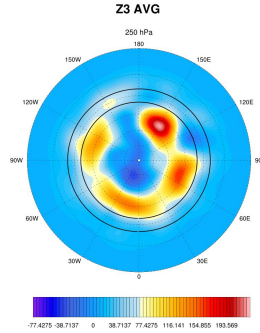


# Drycore: 10K Band ( $r=10^\circ$ ) at $30^\circ$ N (constant with height)

With Anomaly



Difference



Control

